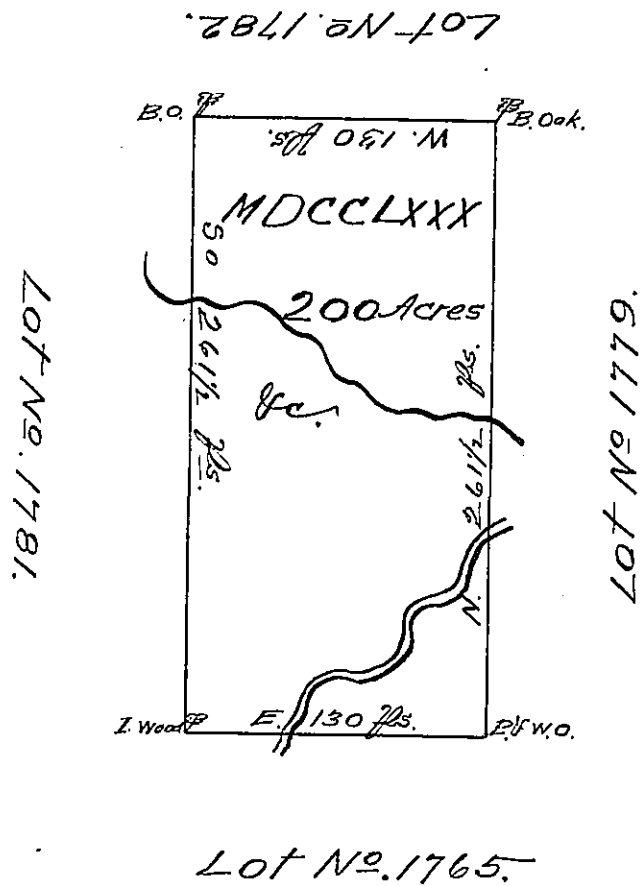


Situate now in Beaver County  
 drawn by John Malone 9<sup>th</sup> January 1806.

Jno. Malone  
 Jan<sup>y</sup> 9<sup>th</sup>  
 1806.

No. 1780  
 Dist. 9.



In pursuance of an Act of the General Assembly of the State of Pennsylvania, passed the 24<sup>th</sup> day of February 1785, entitled "An Act for directing the mode of distributing the Donation Lands promised the Troops by this Commonwealth;" and by order of the Surveyor General, with the approbation of the honorable the Executive Council, I have surveyed on the 7<sup>th</sup> day of June 1786, the above described Tract of Two hundred Acres of Land, and allowance for roads &c. No. 1780, Situate in District No. 1, on the west side of the Allegany river, in the county of Westmoreland.

To John Lukens Esquire,  
 Surveyor General }

G. Evans  
 D. Surveyor

IN TESTIMONY that the above is a copy of the original remaining on file in the Department of Internal Affairs of Pennsylvania, made conformably to an Act of Assembly approved the 16<sup>th</sup> day of February, 1833, I have hereunto set my Hand and caused the Seal of said Department to be affixed at Harrisburg, this sixteenth day of July 1908.

Henry Houch  
 Secretary of Internal Affairs.